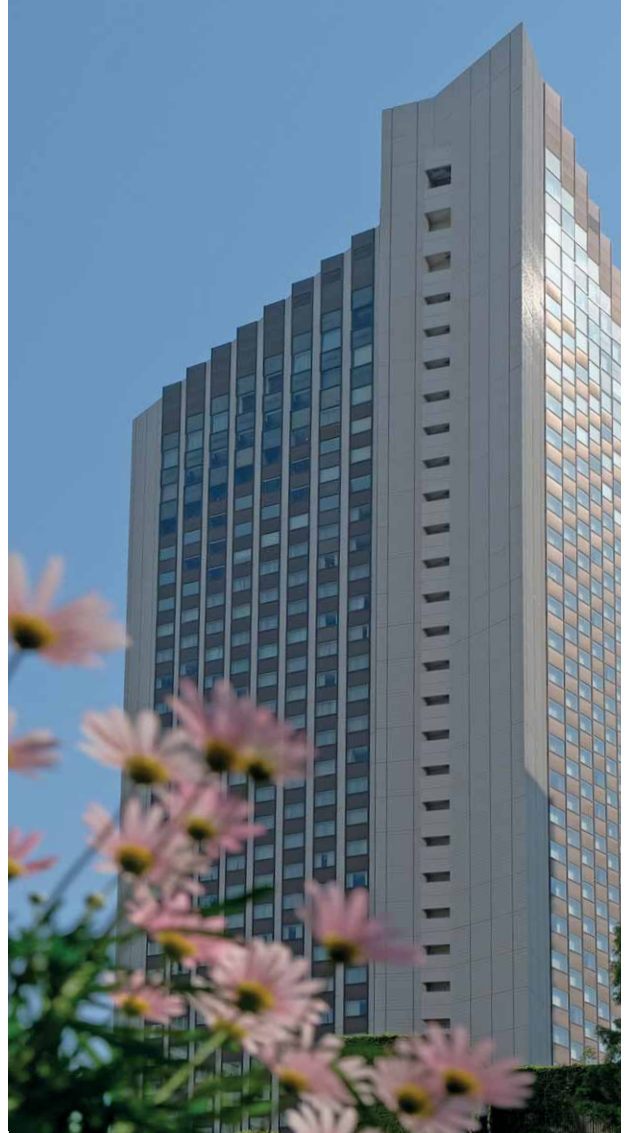



ANA
INTERCONTINENTAL®
TOKYO

1-12-33, Akasaka, Minato-ku, Tokyo
107-0052, Japan
T: +81 (0)3 3505 1111
F: +81 (0)3 3505 1155
anaintercontinental-tokyo.jp



WELCOME

WELCOME



MORE THAN AN ESCAPE.
WE ARE A CONTINUATION OF YOUR TOKYO
JOURNEY.

ANA InterContinental Tokyo mirrors the rich diversity of this city. The dynamic buzz of the lobby calls to mind some of Tokyo's famous street scenes. The hotel's exceptional food experiences evoke the city's world-class dining reputation and the urban sophistication of Club InterContinental reflects the sanctuary to be found in the many local temples and shrines here. All this, whilst history is quietly being written inside its elegant Japanese banquet halls. Every moment you spend here deepens your relationship with this remarkable city.



CLUB INTERCONTINENTAL

The Club InterContinental Lounge at ANA

InterContinental Tokyo acts as a doorway to another level of luxury. With peerless views from the hotel's 35th floor, this lounge is the most spacious of its kind in Tokyo and provides for Club InterContinental guests the opportunity to work, relax or indulge in private seclusion.

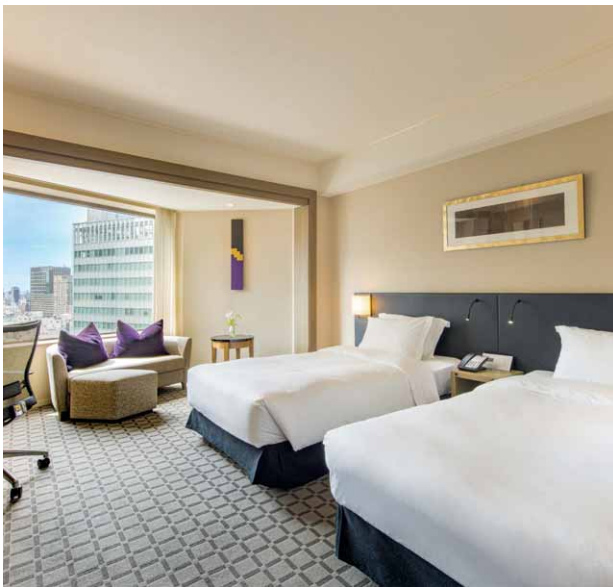
A personal, warm welcome is provided here as is the experience of remarkable culinary delights including extensive gourmet breakfast options, a sensational afternoon tea and evening cocktails served from the lounge's dedicated bar. Thoughtful touches, such as complimentary Tokyo bike experiences provide surprise and delight.



STAY



Offering guests rooms that meet the needs of the seasoned global traveler, with a choice of views of Tokyo Tower, the Imperial Palace Gardens or to vibrant Roppongi. Club rooms and suites are beautifully appointed with designs inspired by the Japanese art of Kintsugi. This is complemented by the exceptional and personalised experience offered in one of Tokyo's best Club Lounges.



BANQUET ROOM

We understand the pressures and logistical challenges of organizing any event, large or small, especially when you can't be there in person. For seamless planning inspired by the highest of standards our dedicated meetings team will work with you on every detail to deliver a truly successful meeting. From the Prominence Ballroom, featuring one of the largest pillar-less ballrooms in Tokyo, blending contemporary design, state of the art technology and elegant Japanese accents through to our private board rooms for up to 12 guests, our range of meeting suites and banquet rooms will provide inspired success for any occasion.



PIERRE GAGNAIRE

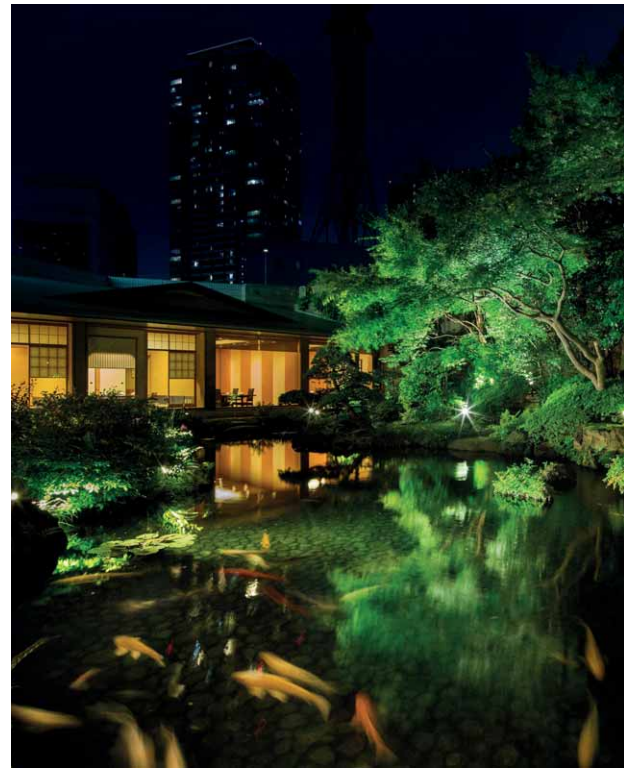
The ANA InterContinental Tokyo is home to three Michelin starred Chef Pierre Gagnaire's highest restaurant in the world. Discover his award winning contemporary French cuisine in elegant surrounds with the stunning Tokyo metropolis and Tokyo Tower as a backdrop. Experience a unique culinary journey of passionate dedication to best quality produce and the creation of unprecedented tastes that reflect this world-renowned chef's philosophy of using food to communicate and incite emotion.



JAPANESE CUISINE



Experience the sublime delight of authentic Japanese cuisine in Unkai, Akasaka Teppanyaki or Sushi Kenzan restaurants, all conveniently located within the hotel. Overlooking the manicured perfection of a traditional garden and pond designed to highlight each season's beauty, Unkai showcases seasonal specialties and exquisite sushi prepared by our world class artisans. For an unforgettable experience, private tatami dining rooms offer refined surrounds in which to savor traditional cuisine such as the famous kaiseki degustation meal. Akasaka Teppanyaki provides a memorable feast for all of the senses. The impressive culinary skills and flair of our expert chefs combined with breathtaking views over Tokyo create a dining experience not to be missed.



GLOBAL DINING

Tokyo is renowned as the dining capital of the world, being home to the largest number of Michelin starred restaurants, and the ANA InterContinental Tokyo is no exception, presenting a range of cuisine that will tempt, surprise and delight the senses of most discerning guest from breakfast, lunch to dinner.



BAR AND ENTERTAINMENT

The four bars and lounges are available for different purposes. A variety of bars and lounges will welcome you, including seasonal, themed afternoon tea, champagne in an open space, a main bar where you can enjoy cigars, and a bar and lounge where you can enjoy alcohol with a view from the 36th floor.



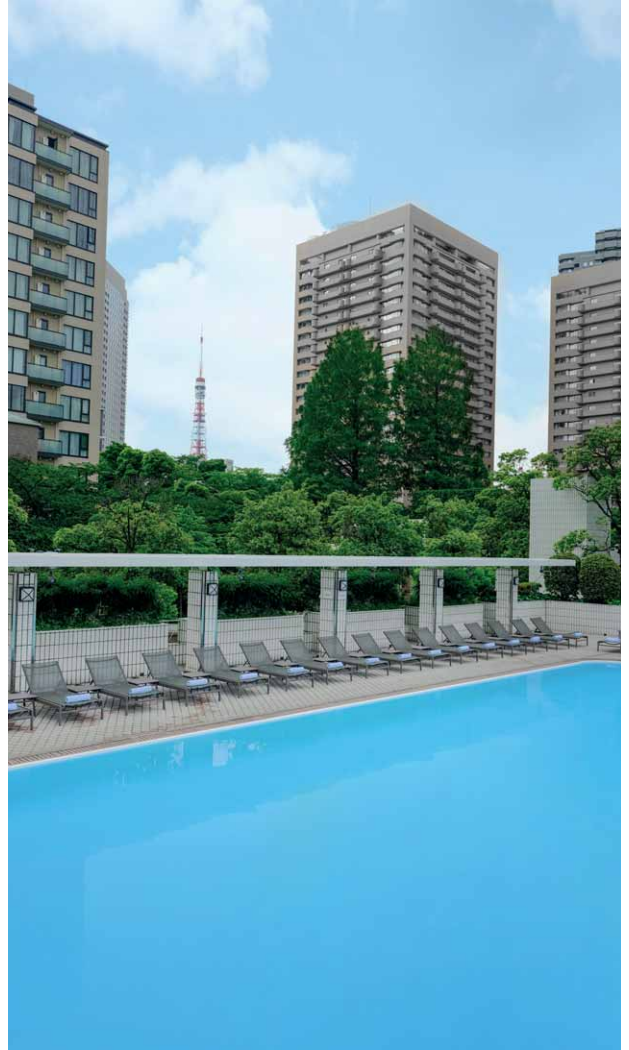
FITNESS CENTER AND

Ka-tsu Health and Fitness Center allows guests access 24 hours per day, and provides a range of the latest 'Life Fitness' equipment, both aerobic machines and free weights, suitable for all levels of exercise.



GARDEN SWIMMING POOL

Our 20-meter outdoor swimming pool and garden terrace, located on the 4th floor, offer a cool retreat from the summer heat and relax in surrounding the greenery oasis, open during the summer time.



LOCATION

Our Akasaka location in the heart of the city is walking distance to Tokyo Tower, The Imperial Palace and The Diet, the seat of Japanese government. The famous shops of Ginza and the nightlife of Roppongi are nearby. Three Tokyo Metro stations in the neighbourhood, connect guests with the rest of Tokyo and beyond.



Namboku and Ginza line
(Tameike-sanno Station, Exit 13)
[one-minute walk]

Namboku and Ginza line
(Tameike-sanno Station, Exit 14)
[3-minute walk] *Elevator and escalator available

Namboku line
(Roppongi-itchome Station, Exit 3)
[one-minute walk]

Approximately 90 minuets from Narita Airpor t by car

Approximately 45 minutes from Haneda Airpor t by car
